

# U-rtk™

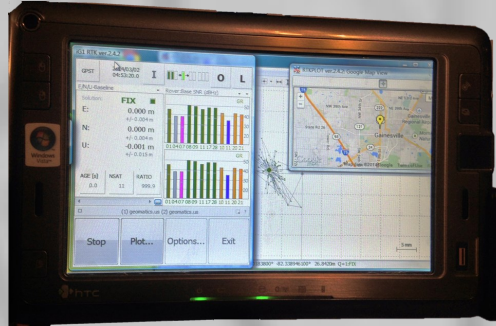
## UNIVERSAL REAL-TIME KINEMATIC

Complete software and data terminal solution for real-time kinematic GNSS systems\*

\* RTK GNSS hardware not included

### KEY FEATURES

- One central device to operate all GNSS hardware
- Turns any GNSS receiver into RTK capable
- Windows-based simple software with lifetime free upgrade<sup>1</sup>
- Touch screen and built-in track-pad
- Built-in 3.5G cellular-based communication link (TCP/IP and NTRIP)
- USB serial communication for external radio
- BINEX and RTCM 2.x 3.x universal formats
- Receiver-specific formats (Topcon/Javad, NovAtel, Hemisphere, ...etc.)



### APPLICATIONS

- Precision surveying and mapping and stake out
- Guidance, navigation, and tracking
- Precision geo-referencing
- Real-time control

The world's vendor-independent RTK GNSS solution

- also available in Windows-based laptop and netbook versions
- Android and iOS tablet-based versions under development

<sup>1</sup> upgrade through Geomatics.us website

<sup>2</sup> 1/4"-20 to/from 5/8"-11 adapters available

<sup>3</sup> operate at CPU to communicate with the G1-r1™ system in real time

<sup>4</sup> iG1™ v1.0: free of charge with lifetime upgrade

<sup>5</sup> no previous knowledge of GNSS processing required

Specifications subject to change without notice

## SPECIFICATIONS

### DATA TERMINAL

#### Mechanical

- Dimensions: 8"×5"×1"
- Weight: 800g

#### Battery

- Chemistry: Li-ion polymer
- Capacity: 2700 mAh @ 7.4 V
- Life: 2 hrs (53 hrs standby mode)
- Charger: 12 VDC (3A max.)

#### Main Computer

- CPU: Intel A110 800 MHz
- Graphics: Intel GMA 950
- Display: 7" TFT-LCD soft touch screen
- RAM: 1024 MB
- Hard disk: 40 GB
- OS: Windows Vista Business

#### Pocket PC mode

- CPU: Qualcomm 400 MHz (low power)
- RAM: 64MB
- OS: SnapVUE

#### Interface

- D-Sub VGA out (for external monitor)
- USB 2.0 host
- SDIO card slot
- fingerprint reader
- track-pad and device control buttons
- stereo speakers and microphone
- 3.5 mm stereo audio out & microphone
- Color CMOS VGA webcam
- QWERTY keyboard (physical and on-screen)
- Stylus and free handwriting
- Power and activity LEDs

#### Wireless Communication

- WiFi IEEE 802.11b/g
- Bluetooth v2.0
- Quad-band GSM/GPRS/EDGE
- Tri-band UMTS/HSDPA

### ACCESSORIES

#### G1-urtk holder

- Dimensions: 8"×2"
- high-grade ABS plastic
- slide-in swivel base 20° Omni directional
- 1.06" mount with screws or clamp

#### G1-pole pole

- 67" 1/4"-20<sup>2</sup> graduated rover pole
- 4 folds collapses to 21"

#### G1-stand support

- 67" tripod with central stand

#### G1-clip clip

- Y-shaped rod-to-stand steel clip

#### G1-rad radio

- USB-powered and run 900 MHz radio<sup>3</sup>

### SOFTWARE<sup>4</sup>

- Windows one-stop RTK package
- Single point and baseline solutions
- Simple and intuitive GUI<sup>5</sup>
- Analysis and visualization tools
- Google Maps and Google Earth embedded
- CORS data supported
- NGS calibrated antennae supported

**WWW.GEOMATICS.US**

COPYRIGHT © 2013 GEOMATICS USA, LLC. ALL RIGHTS RESERVED

Geomatics USA, LLC  
2019 NW 21st Ln, Gainesville, FL 32605  
info@Geomatics.US Ph: (352) 226-9564